

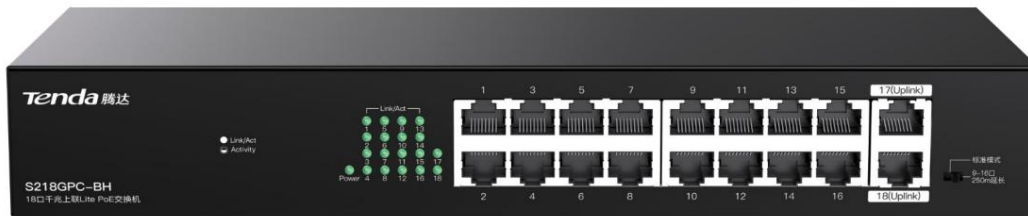
Tenda



S218GPC-BH

18-port Gigabit Uplink Lite PoE Switch

Link
More



S218GPC-BH

18-port Gigabit Uplink Lite PoE Switch

Product Introduction

The S218GPC-BH is a 16-port 100Mbps and 2-port Gigabit uplink unmanaged PoE switch designed by Tenda. It is compatible with AF/AT/BT standard PoE power supply methods and intelligently identifies powered devices. The maximum output for the 1-2 port PoE is 60W, and the maximum output for the 3-16 port PoE is 30W.

The entire unit has a power consumption of 167W. It supports rack mounting and features PoE watchdog timer, intelligent power control, network extension, and other functions, making it ideal for surveillance networking.

Demand-driven solutions are an ideal choice for video surveillance networks for SMEs, convenience stores, and street-side restaurants.

Product Features

- Compliant with IEEE 802.3, IEEE 802.3u, IEEE 802.3ab, and IEEE 802.3z • 16 x 10/100 Base-T Ethernet ports (Data/Power), 2 x 10/100/1000 Base-T Ethernet ports (Data) • 1K MAC address and auto-learning MAC address • IEEE 802.3x full-duplex flow control and half-duplex backpressure flow control • 7.2Gbps non-blocking line-speed forwarding backplane bandwidth • Maximum PoE port output power: 30W per port, maximum PoE output power for the entire unit: 155W • 1M large cache design • Standard 1U height, rack-mountable

Product Selling Points



Dual-mode switching

Standards sharing, network extension



Rack design

Featuring a standard 13-inch metal chassis design, it supports rack and wall mounting.



The intelligent PoE power supply

is compatible with 802.3AF/AT/BT, with a total output of 167W and a maximum output power of 30W per port, providing stable power and data transmission for high-definition PoE network cameras.

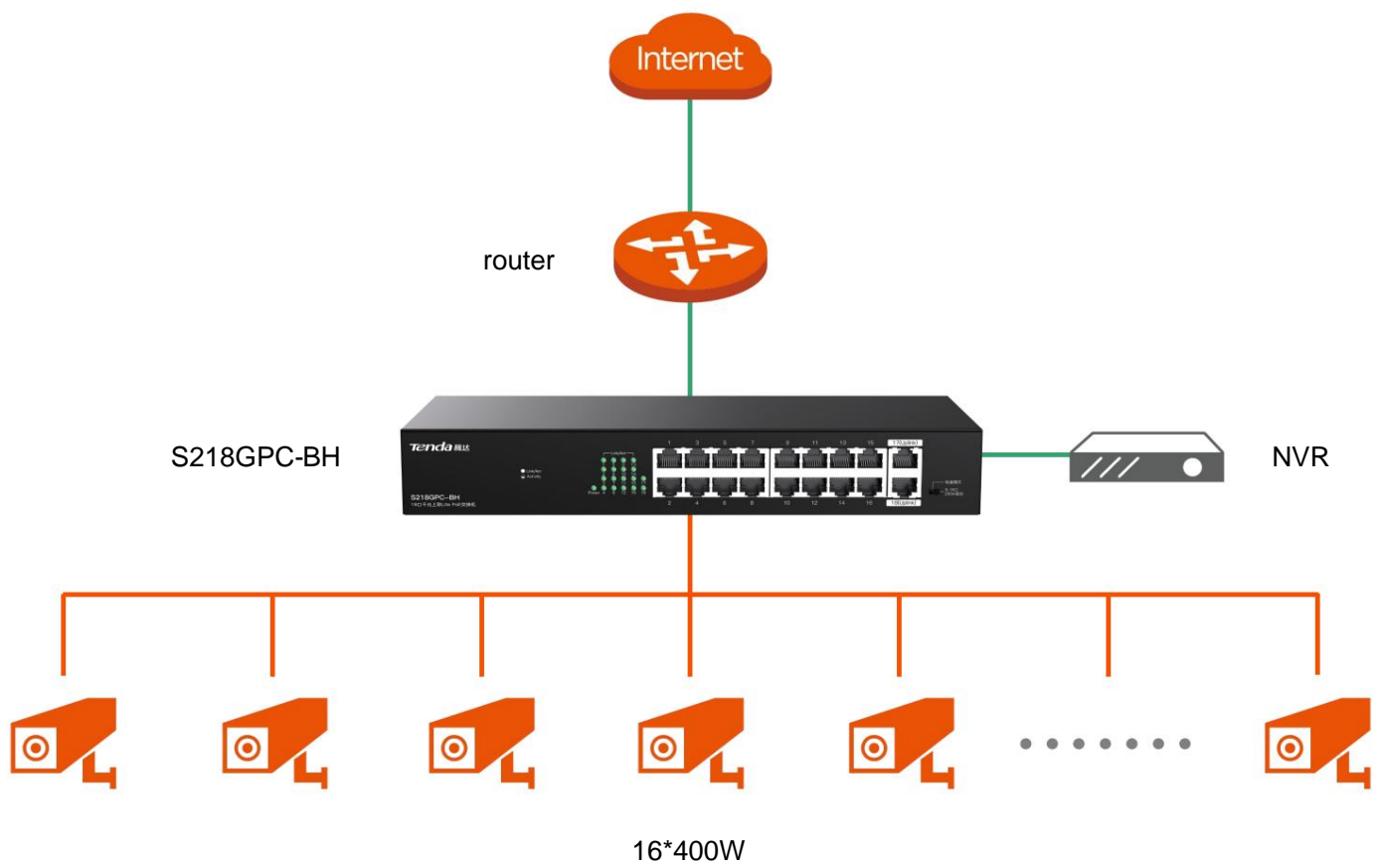


Double-mouth couplet

The uplink has dual gigabit Ethernet ports, allowing simultaneous connection to a router and NVR to meet security network transmission requirements and ensure smooth video streaming.

Typical applications

-  PoE power supply cable
-  Gigabit Ethernet



Technical Specifications

Product Model	S218GPC-BH
Hardware Specifications	
Network Standards	IEEE 802.3, IEEE 802.3u, IEEE 802.3ab, IEEE 802.3x
Mean Time Between Failures (MTBF)	≥50,000 hours
indicator lights	Each port has one Link/Ack indicator light. Each device has one PoE Max indicator light. Each device has one Power indicator light.
Fixed port	16 10/100 Base-T Ethernet ports (Data/Power) Two 10/100/1000 Base-T Ethernet ports (Data)
Port surge protection	≥6KV
Forwarding mode	Store-and-forward
Switching capacity	7.2Gbps
Packet forwarding rate	5.36Mpps
MAC address table	1K
cache	1M
PoE power supply	Ports 1-2 are compatible with 802.3BT; Ports 3-16 are compatible with 802.3af/at PoE power supply. 1-2 rounds: 1245 positive, 3678 negative; 3-16 rounds: 1 2 positive, 3 6 negative.
Product dimensions (L*W*H)	294*120*44mm
Overall power consumption	Total power consumption: <167W; Maximum PoE output power: 155W
Usage Environment	Operating temperature: 0~45℃ Storage temperature: -40~70℃ Operating humidity: 10%~90% RH (non-condensing); Storage humidity: 5%~90% RH (non-condensing)
Software Specifications	
DIP switch mode	Standard sharing: All ports can communicate with each other, and it can be used as a regular unmanaged PoE switch. Network extension: The maximum transmission distance of ports 9-16 of the switch can reach 250 meters, and all ports can communicate with each other.
Watchdog	support
Certification	Test report

Shenzhen Jixiang Tengda Technology Co., Ltd., Tengda Technology

Building, Building E3, International E-City, No. 1001 Zhongshan Park Road, Nanshan District, Shenzhen

Website: www.tenda.com.cn

Postcode: 518052

Technical support email: tenda@tenda.com.cn



Scan the QR code to follow Tengda's official WeChat account and contact their online customer service.